

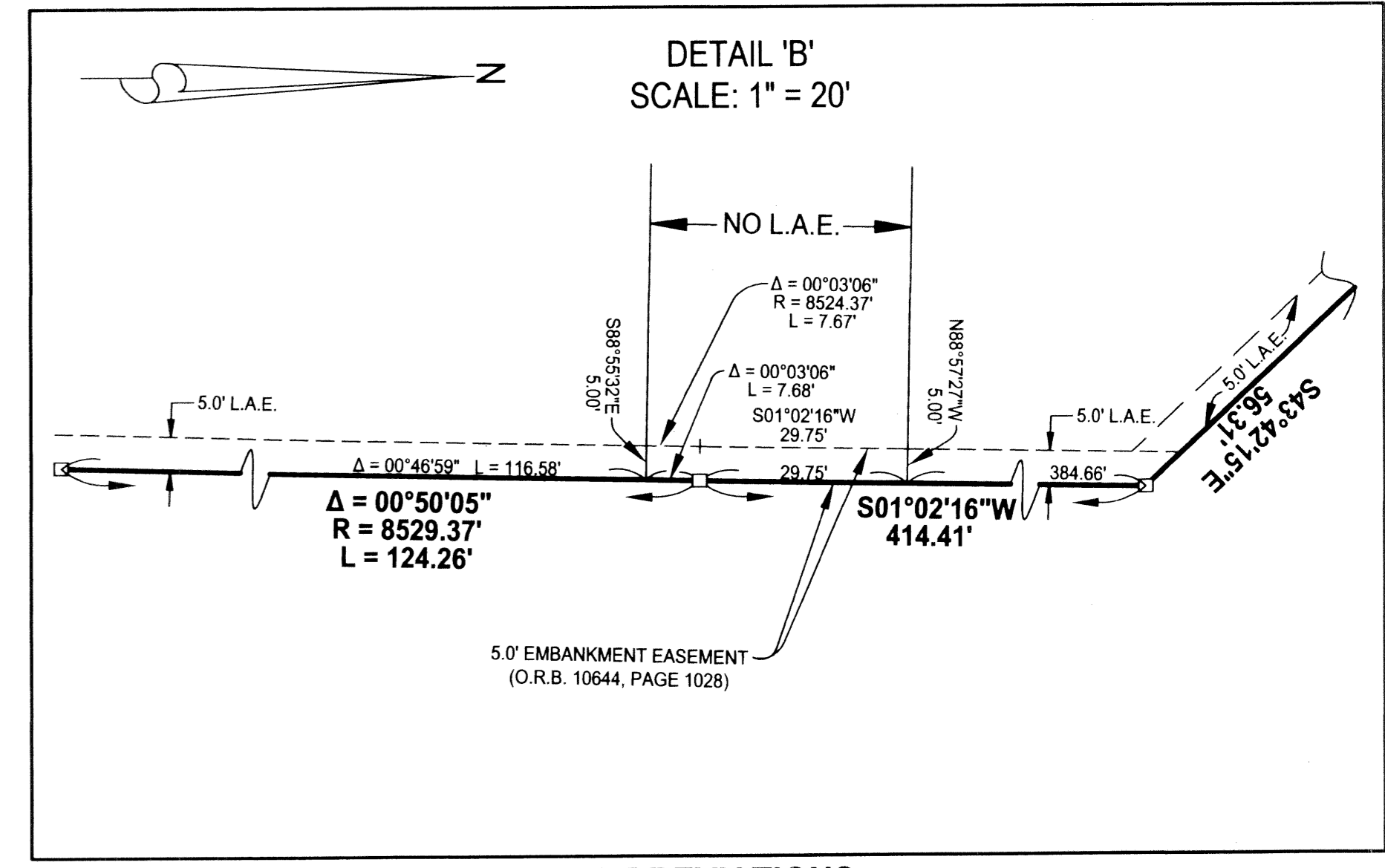
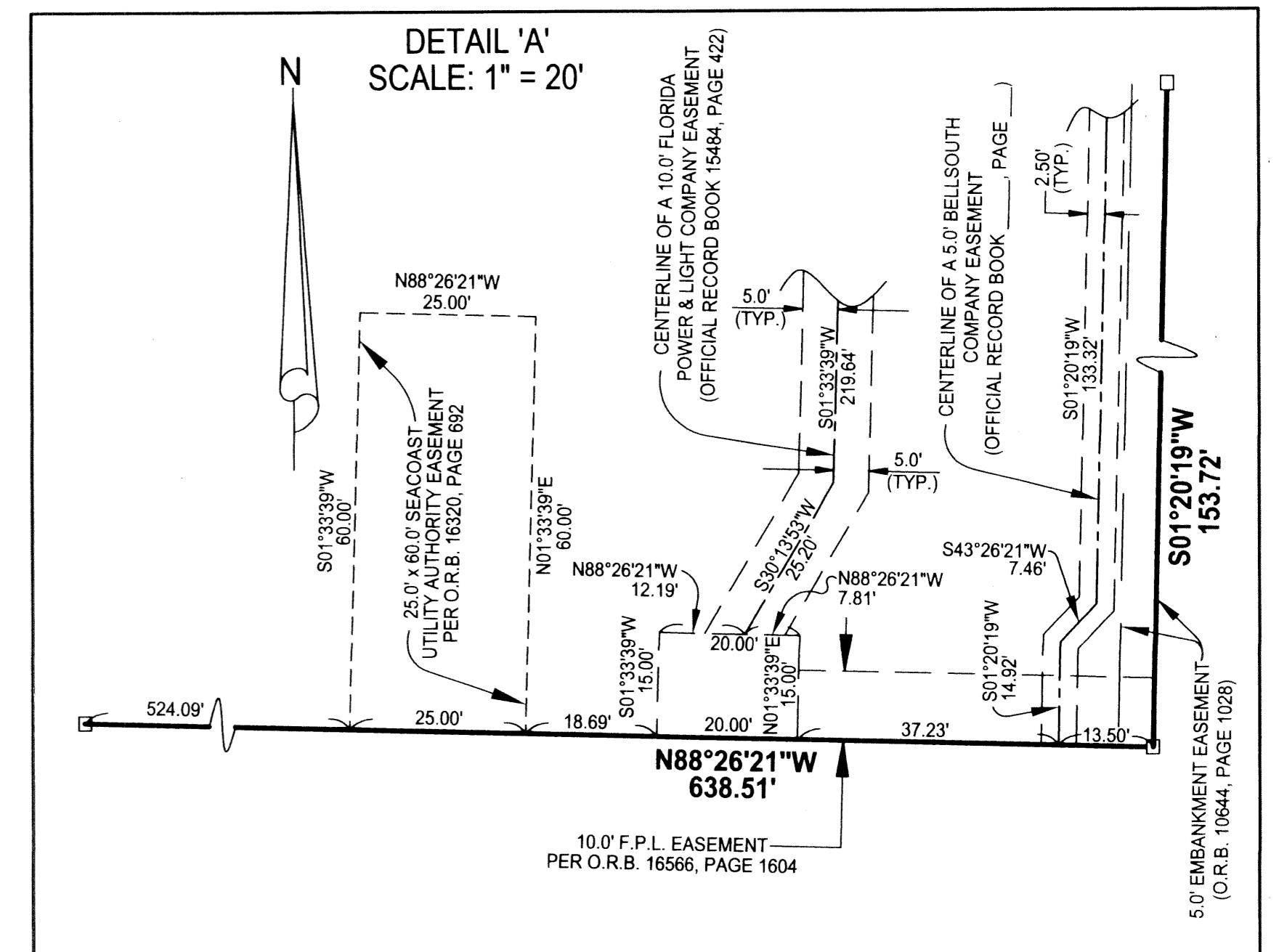
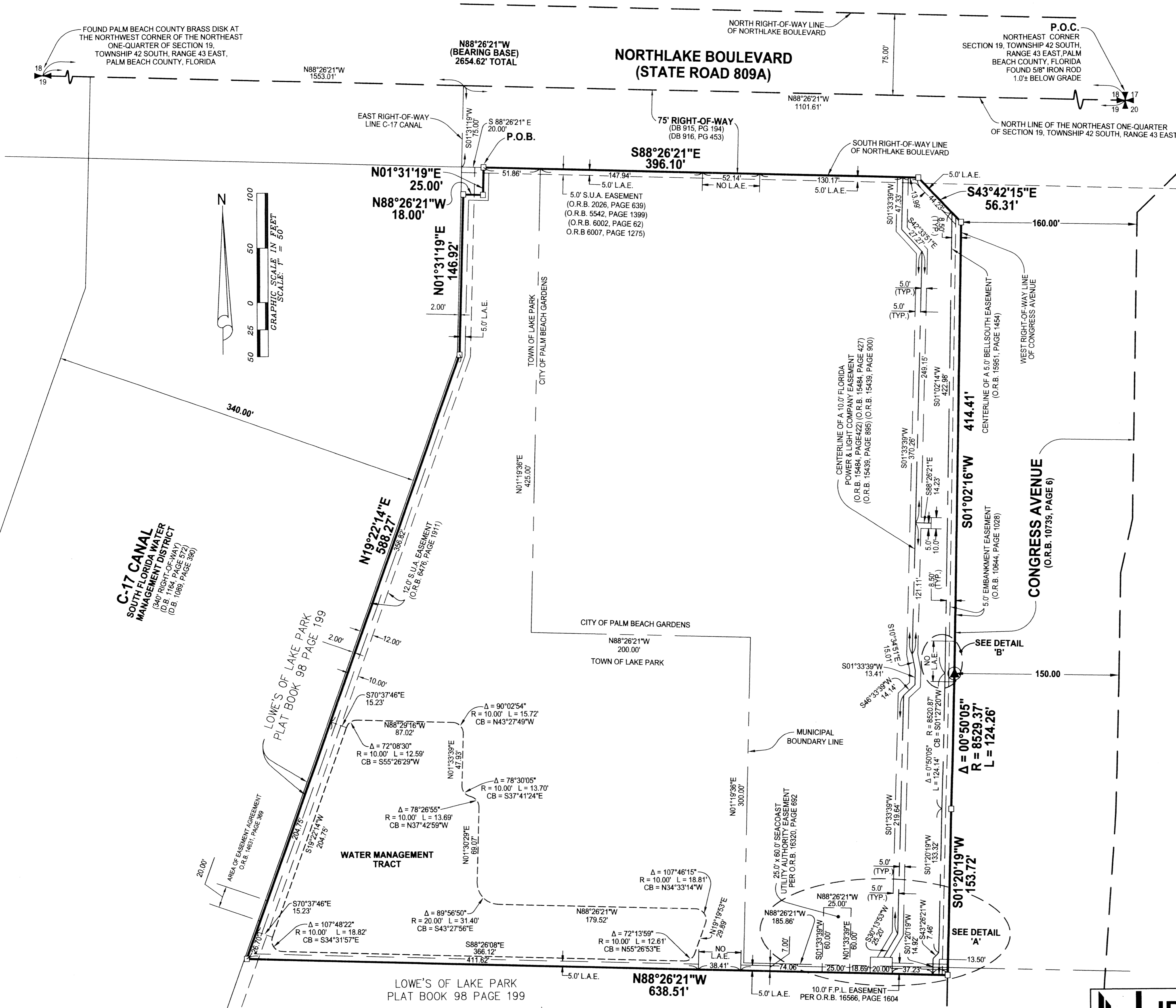
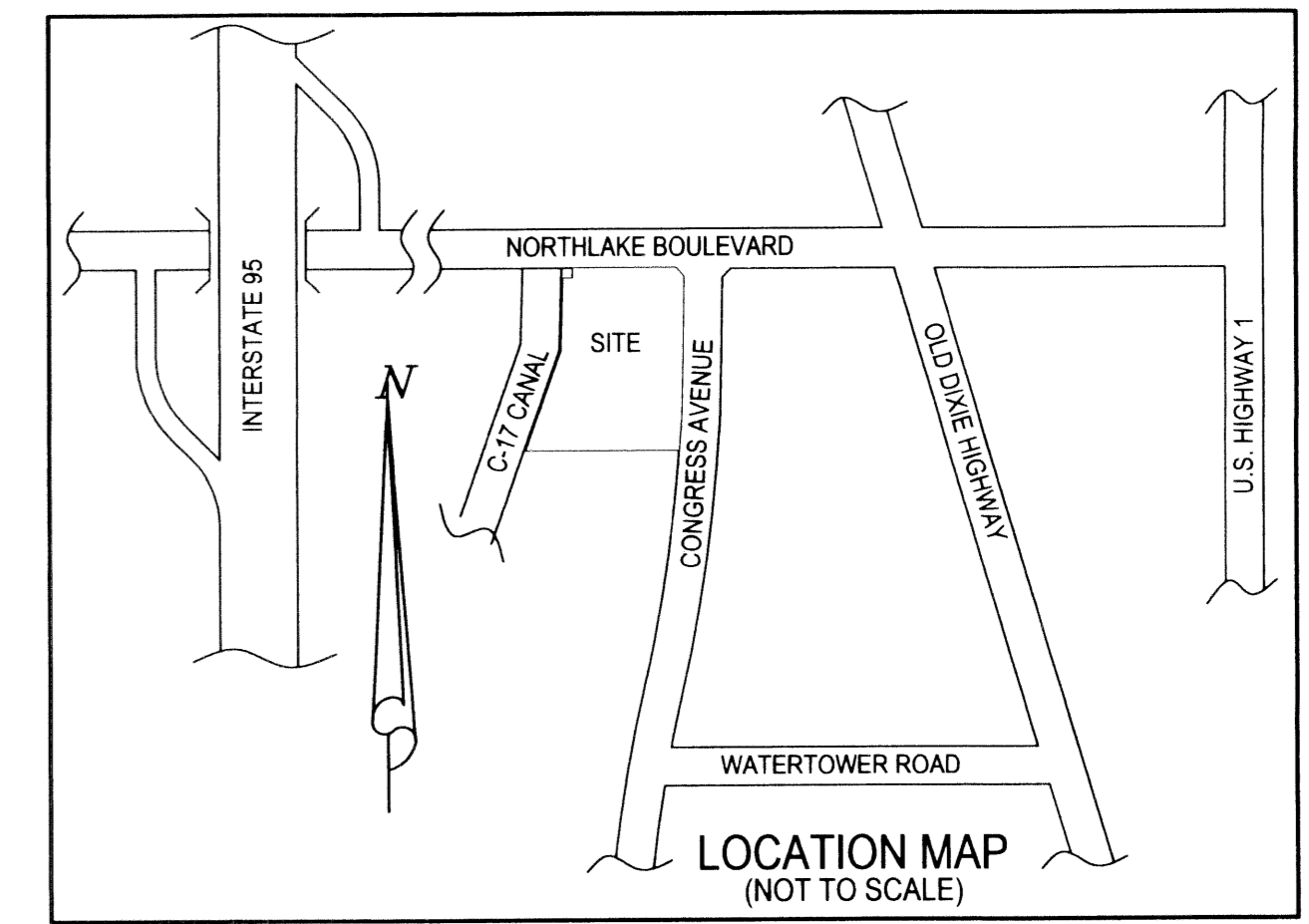
NORTHLAKE SQUARE WEST

SITUATE IN SECTION 19, TOWNSHIP 42 SOUTH, RANGE 43 EAST,
CITY OF PALM BEACH GARDENS AND THE TOWN OF LAKE PARK,
PALM BEACH COUNTY, FLORIDA

APRIL, 2004

SHEET 2 OF 2

184



ABBREVIATIONS

- | | |
|-------------------------------------|--|
| POC = POINT OF COMMENCEMENT | F.P.L. = FLORIDA POWER & LIGHT COMPANY |
| POB = POINT OF BEGINNING | F.E.C. = FLORIDA EAST COAST RAILROAD |
| PRC = POINT OF REVERSE CURVE | PRM = PERMANENT REFERENCE MONUMENT |
| PC = POINT OF CURVE | LB = LICENSED BUSINESS |
| PT = POINT OF TANGENT | DOT = DEPARTMENT OF TRANSPORTATION |
| NR = NON RADIAL | LBE = LANDSCAPE BUFFER EASEMENT |
| C/L = CENTER LINE | LAE = LIMITED ACCESS EASEMENT |
| R = RADIUS | DE = DRAINAGE EASEMENT |
| L = ARC LENGTH | UE = UTILITY EASEMENT |
| Δ = DELTA | ORB = OFFICIAL RECORD BOOK |
| S.U.A. = SEACOAST UTILITY AUTHORITY | PB = PLAT BOOK |
| L.A.E. = LIMITED ACCESS EASEMENT | TYP. = TYPICAL |

LIDBERG LAND SURVEYING, INC.
 675 West Indian Town Road, Suite 200,
 Jupiter, Florida 33458 TEL. 561-746-8454
 LB 4431

CAD K:\AUTOCAD 2000\194243\02-095\DWG\0952306.DWG			
REF K:\AUTOCAD 2000\194243\02-095\DWG\0952101.DWG			
FLD	AM./M.O.	FB. 374 382	PC. 35-37 39
OFF	S.F.B.	DATE 09/18/03	
CKD	D.C.L.	SHEET 2 OF 2	DWG 002-095P